

Community Development



Strategic FDOT Transportation Project Costs

Chuck Barmby



Strategic Florida DOT Initiatives

- South Florida Avenue (Ariana to Pine)
 - ✓ Ariana Street
 - ✓ Other Parallel Routes
 - ✓ Costs Associated with Test
- Lakeland Hills Boulevard (Parkview to Granada)
- Downtown Intermodal Center
- Providence Road



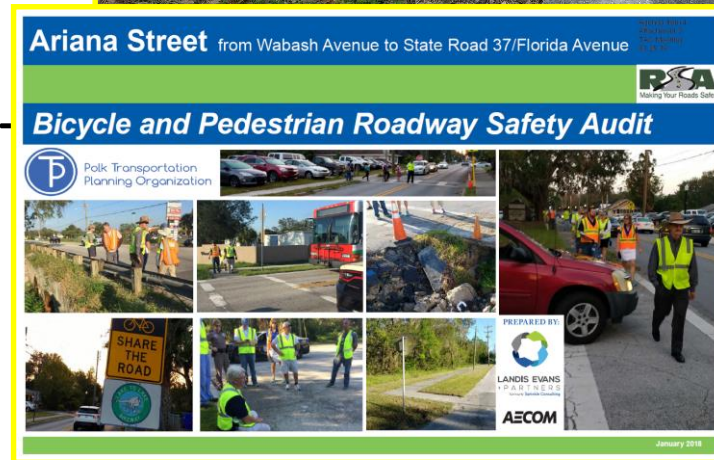
South Florida Avenue

- Ariana Street to Pine Street
 - ✓ City Commission Resolution #5370
 - ✓ Road-Diet Test Under Development
 - ✓ Roadway Safety Audit Conducted in 2017
- City participation in test and any improvement package
- Mitigation for diverted traffic to City streets



Florida Avenue – Diverted Traffic

- Ariana Street
 - ✓ Florida Avenue to Harden Boulevard
- Comment during 2017 Public Meeting
- TPO commissioned Roadway Safety Audit
- Report w/ Short- to Long-Term Improvements
- **Under review during CIP development**



- Complete Street Project requested through TPO
- Scoping underway
- Design to begin soon
- Construction:
 - ✓ Parkview to Bella Vista is programmed in FY 2020
 - ✓ Bella Vista to Granada is not programmed



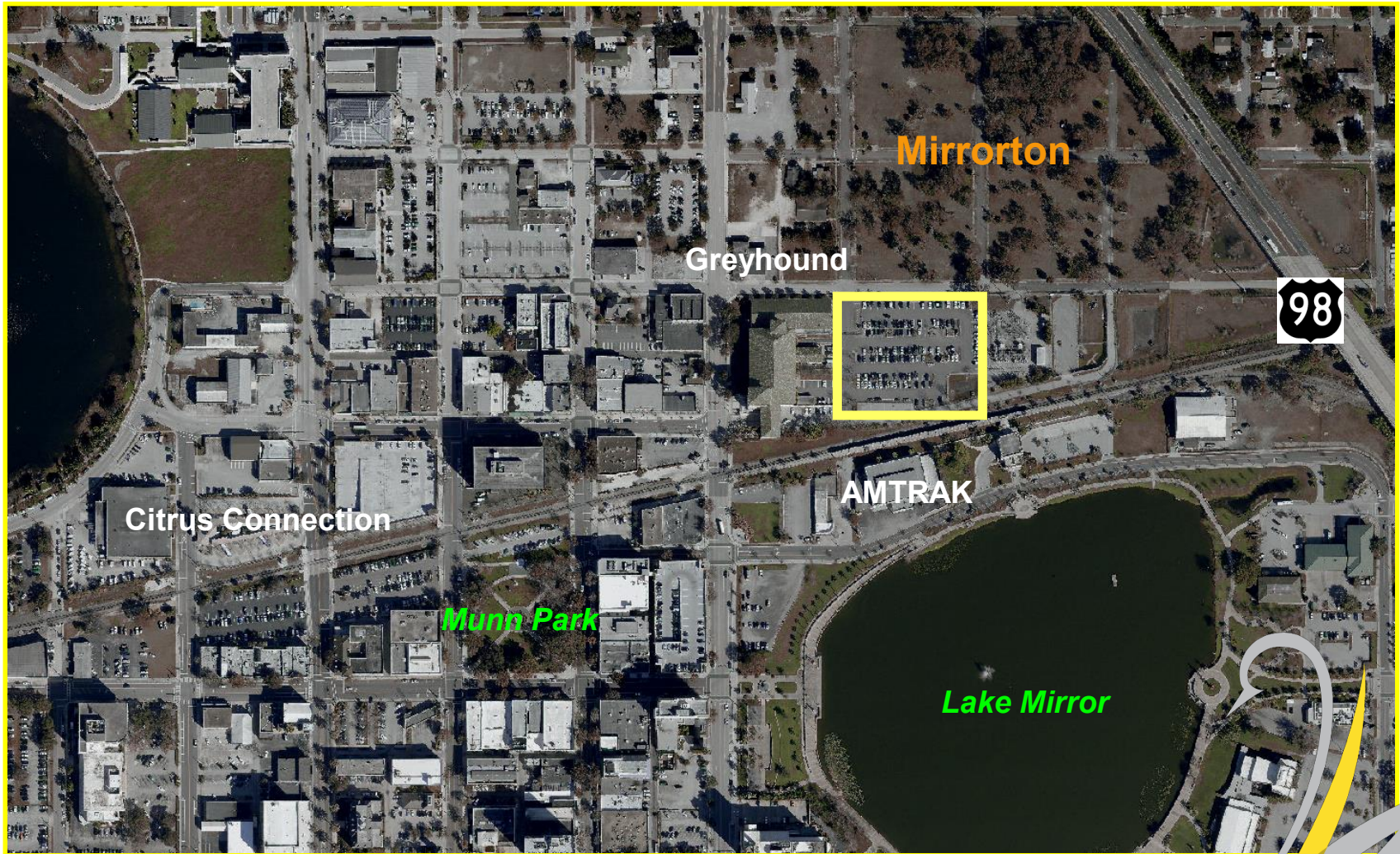
Lakeland Hills Blvd



- Turn lanes, mid-block crossings and islands with lighting and sidewalk improvements
- Stormwater Reconstruction
- **Utility Relocation**
- **\$1 million in Transportation Impact Fee allocation**
- Both segments must be constructed with same project.

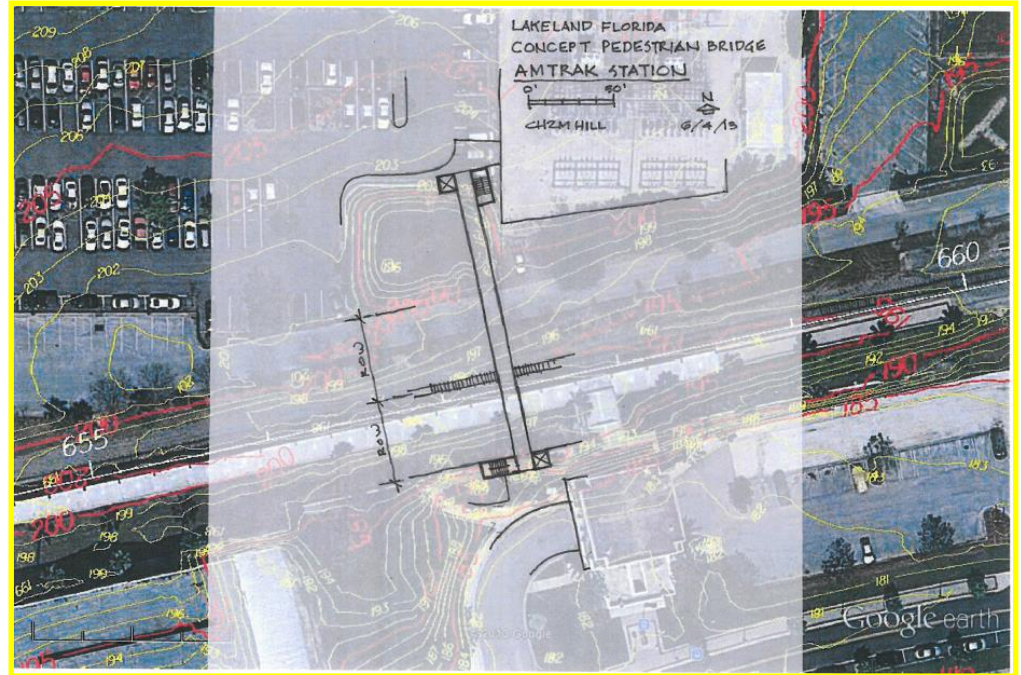


Lakeland Intermodal Center



COMMUNITY DEVELOPMENT

- City Commission Resolution #5386
 - ✓ Overpass near AMTRAK Station
 - ✓ Munn Park area safety upgrades
 - ✓ Request for Intermodal Center Study
 - ❖ Parking garage with capacity supporting future passenger rail service
 - ❖ Potential Citrus Connection and Greyhound terminal relocation

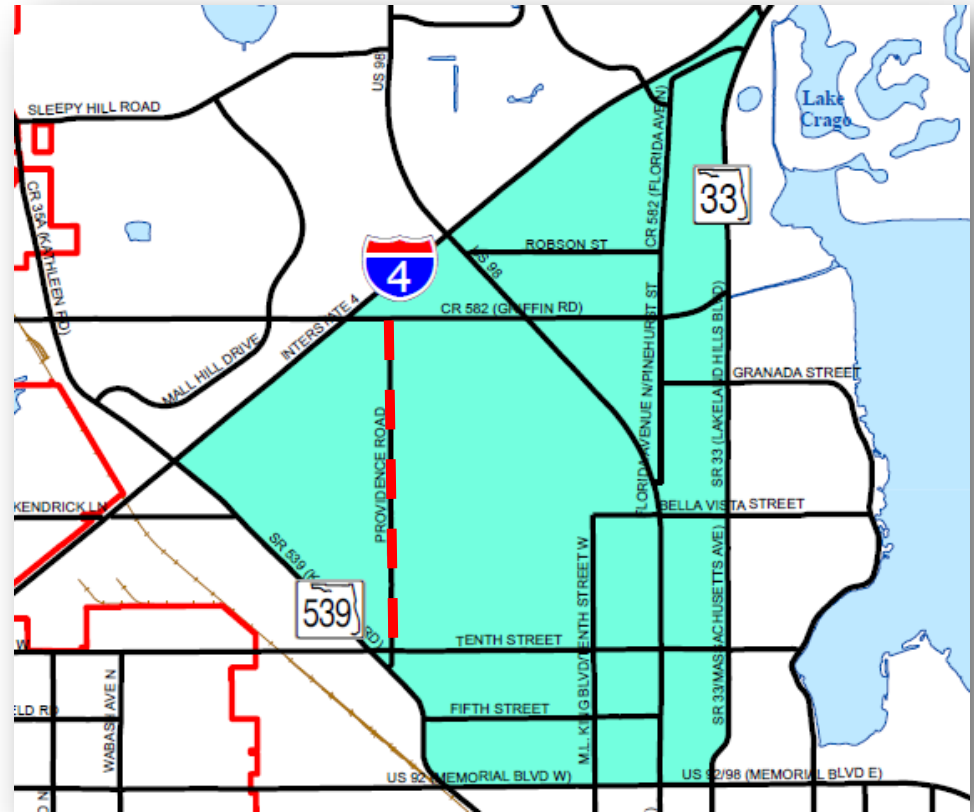


- City owns property under a portion of the current Citrus Connection terminal
- FDOT has programmed Intermodal Planning Study in FY 2019 (\$250,000)
- **City match likely needed for garage component of future Intermodal Center**
- **Match (such as in-kind services) requested for safety upgrades**



Providence Rd

- Important collector road in northwest Lakeland
- Recent improvements
 - ✓ At 10th Street
 - ✓ At Kathleen Road
- Development adjacent to corridor
- Cross-section is not up to City standard
- Programmed and potential funding needs for additional improvements in upcoming fiscal year.



Providence Rd

- 10th Street to Griffin Road
- Sidewalk, bike facility, transit, aesthetic improvement needs
- Drainage/Stormwater Impacts
- Lakeland AAA Study
 - ✓ Roadway Safety Audit
- Federal-Aid Network
- 1.) 10th to 14th Streets and 2.) Interstate Drive to Griffin Road
- **Mid-Town CRA**
 - ✓ \$700,000 in current year
 - ✓ \$400,000 in FY 2019
- **Transportation Fund**
 - ✓ \$150,000 in FY 2019 for resurfacing

