

Steve Scruggs



Lakeland Economic Development Council

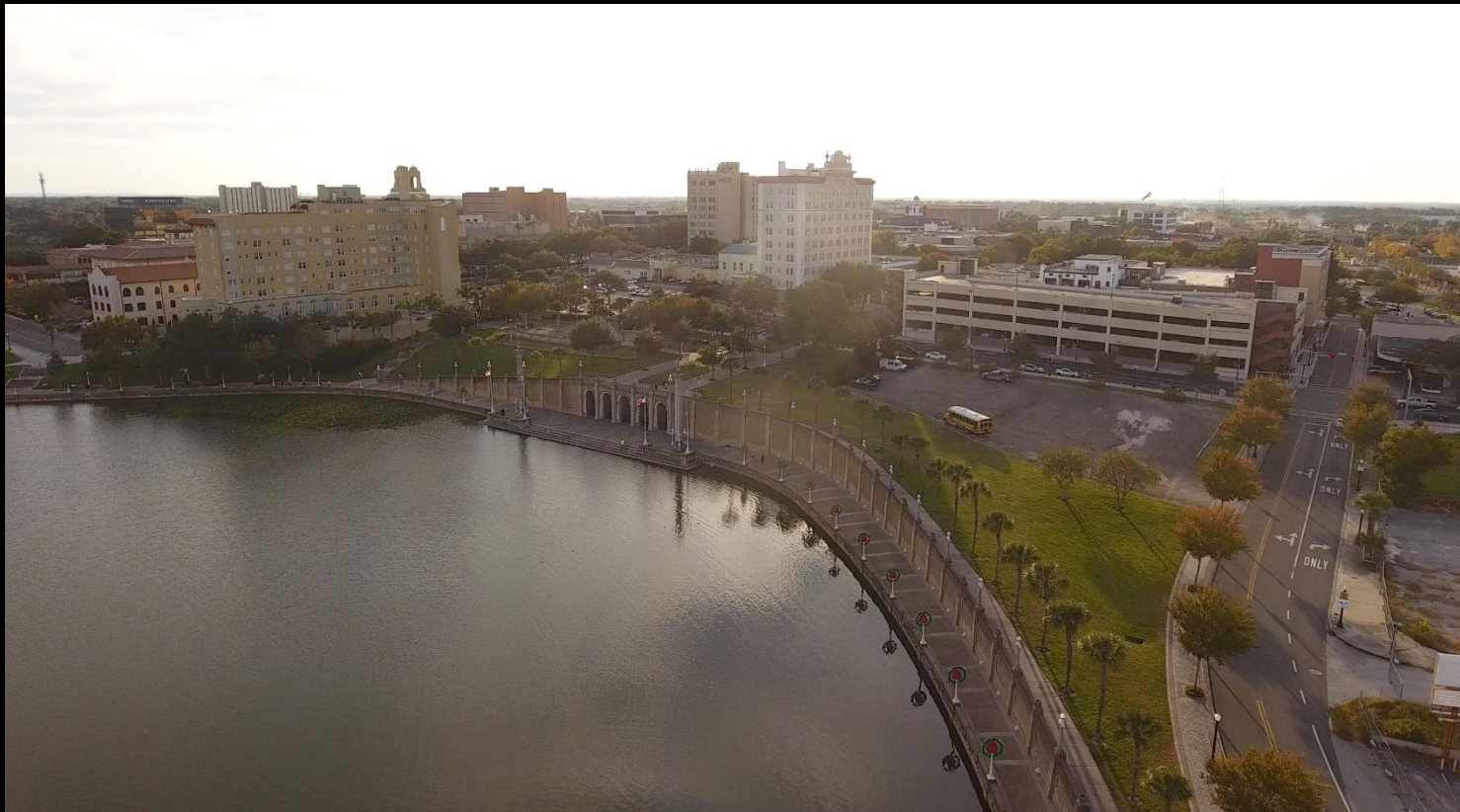
- Serving in his 30th year with the Lakeland Economic Development Council (LEDC).
- Received his B.S. Degree from Troy State University in Troy, Alabama and his Masters Degree in Economic Development at the University of Southern Mississippi in Hattiesburg, Mississippi.
- Steve is a member of Trinity Presbyterian Church and is married to Tammy and they have three children.



Steve Scruggs, President
Lakeland Economic
Development Council
(LEDC)

Development Sites

- Identify Sites
- Identify Incentives to go with sites
- Identify Users



Potential Development Sites

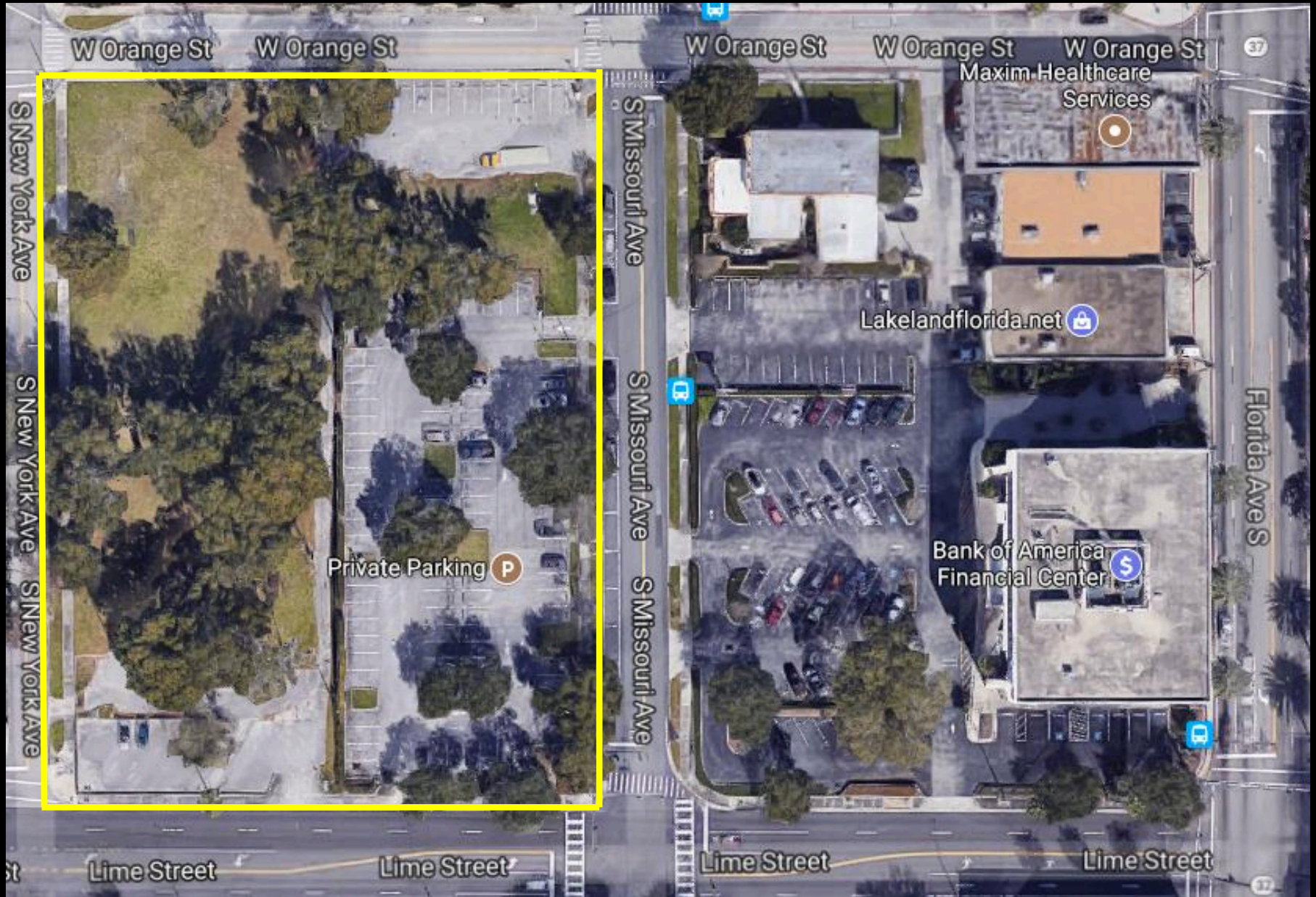
- City & CPS Parking Lot
- Aspyre/Publix Parking Lot
- Aspyre Heritage Plaza Parking Lot
- Catapult Parking Lot
- Fire Station Parking Lot
- Terrace Hotel Parking Lot
- Publix/Citrus Mutual Parking Lot
- Lemon Street Parking Garage Lot
- Frontier Parking Lot
- Wells Fargo Parking Lot



City & CPS Parking Lots



Aspyre's Publix Lots



Aspyre's Heritage Plaza



Aspyre's Heritage Plaza Lot



Lake Mirror - Corporate Sites

- Catapult Parking Lot
- Former Fire Station Parking Lot



Catapult & Fire Station Parking Lots



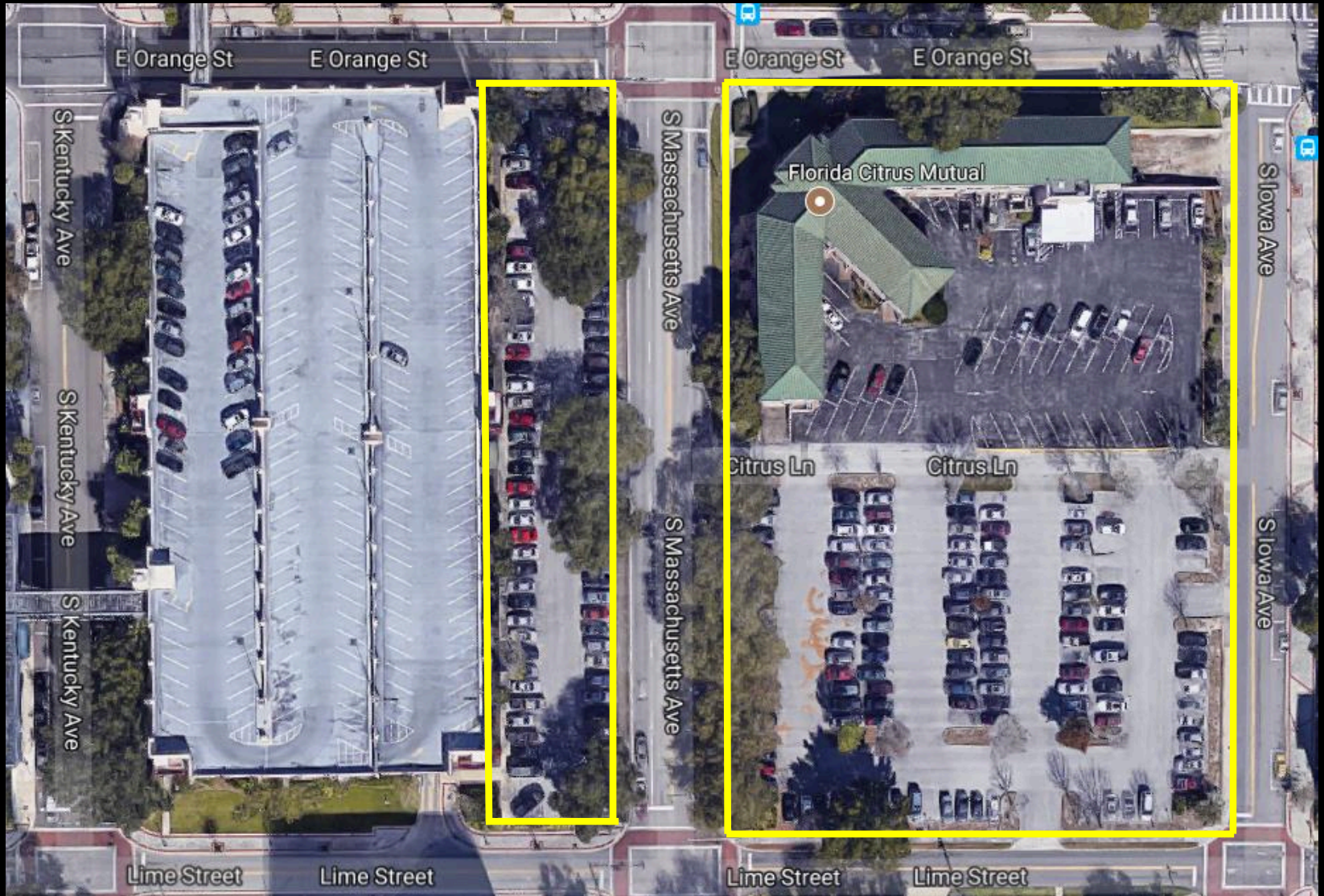
Terrace Hotel Lot



Terrace Hotel Lot



Publix/Citrus Mutual/City Lots



Lemon Street Parking Garage Lot



Lemon Street Parking Garage Lot



Publix/Citrus Mutual Lot



Frontier Lot



Frontier Lot



Wells Fargo Lot



Wells Fargo Lot



Wells Fargo Lot



Local Talent

- Local Developers
- Local Architects
- Identify 5-6 Potential Development Sites

